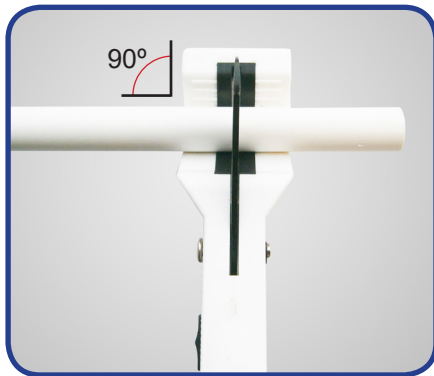


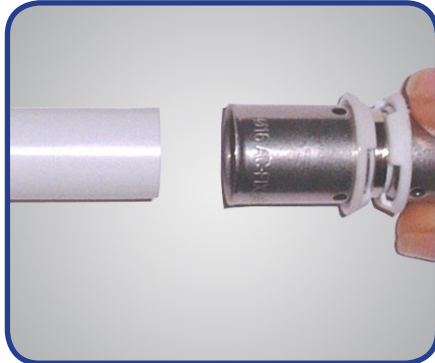
ASSEMBLY STEPS DN 16 AT 32



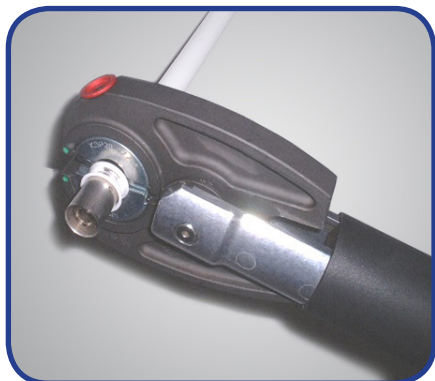
1. Cut the pipe as clean and perpendicular as possible to its axis.



2. It is necessary to calibrate and chamfer the pipe inside in order not to damage the O-Rings of the fittings. The AC-FIX chamfering tool chamfers and calibrates the pipe.



3. Insert the fitting into the pipe. The pipe must be seen through the check holes of the sleeve.



4. Place the side of the jaw beside the plastic ring and press.

Important:

The fittings AC-FIX PRESS-MULTI can be pressed with jaws or inserts type U, H, RF and RFz. For pressing with jaws or inserts type TH, contact our technical department.